

WINTER 2023

Live Your
D r e a m | **MY AMF**

59'1" (18 M) | AZIMUT | 2021 | ITALY



MY AMF - AZIMUT S6 - UNDERWAY



MY AMF – AZIMUT S6 – INTRODUCTION

AZIMUT S6

The S6 Azimut Sport Fly's sleek and modern design, state-of-the-art technology, and luxurious amenities, make this 60-foot 3-cabin configuration a statement in on-water luxury. Her hull is designed for maximum speed and efficiency, while her triple Volvo Penta engines provide plenty of power and performance.

SPECIFICATIONS

BUILDER
[Azimut Yachts](#)

MATERIALS
[GRP + Carbon Fiber](#)

STYLIST
[Francesco Guida](#)

NAVAL ARCHITECT
[Azimut Yacht](#)

COUNTRY
[Italy](#)

YEAR
[2021](#)

MAIN ENGINES
[3 x IPS 700 D8](#)

GENERATOR
[3.5 kW - 220V/50 Hz](#)

DIMENSIONS

LENGTH
[59'1" \(18m\)](#)

DISPLACEMENT
[29.5 t](#)

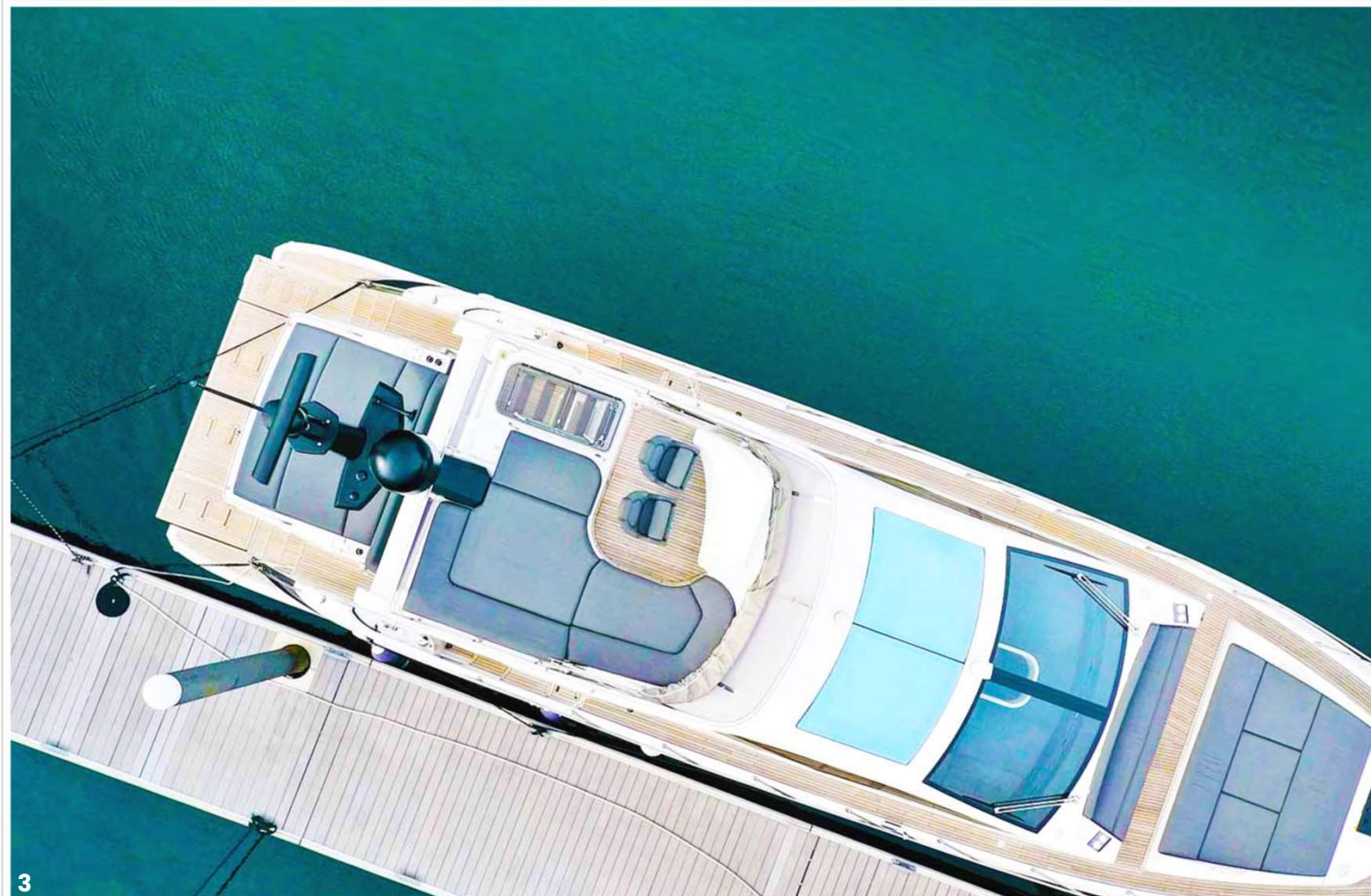
BEAM
[15'7" \(4.75m\)](#)

DRAFT
[5'3" \(1.61m\)](#)

ACCOMMODATION

GUESTS
[6](#)

CREW
[2](#)



MY AMF - AZIMUT S6 - MAIN DECK SALOON AFT



MY AMF – AZIMUT S6 – MAIN DECK SALOON FORWARD



MY AMF - AZIMUT S6 - MAIN DECK HELM STATION



MY AMF - AZIMUT S6 - MAIN DECK HELM STATION



MY AMF – AZIMUT S6 – GALLEY



MY AMF – AZIMUT S6 – MASTER STATEROOM



MY AMF - AZIMUT S6 - MASTER STATEROOM



MY AMF – AZIMUT S6 – MASTER STATEROOM



MY AMF - AZIMUT S6 - MASTER VANITY



MY AMF - AZIMUT S6 - MASTER ENSUITE



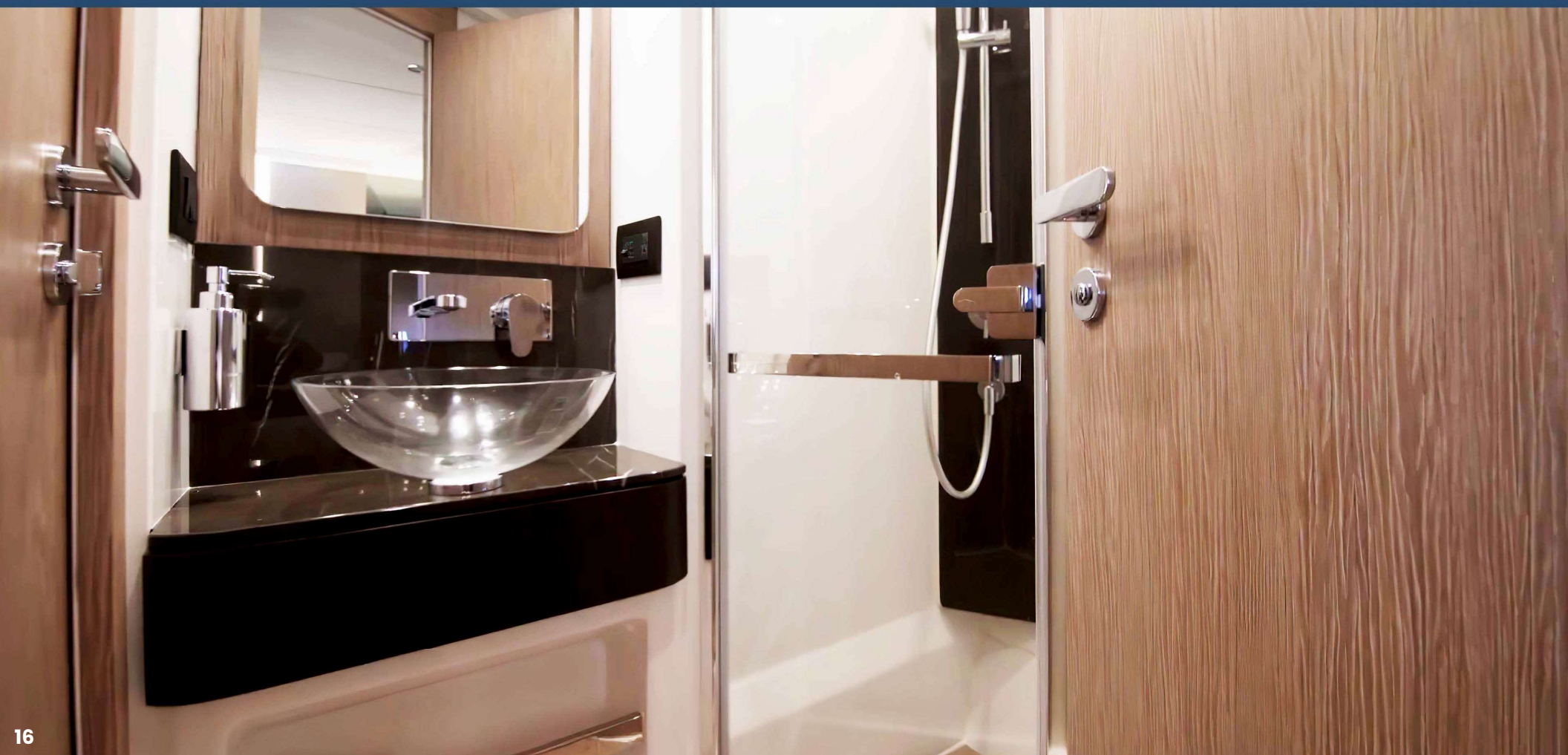
MY AMF - AZIMUT S6 - VIP STATEROOM



MY AMF – AZIMUT S6 – GUEST STATEROOM



MY AMF - AZIMUT S6 - GUEST STATEROOM ENSUITE



MY AMF – AZIMUT S6 – AFT DECK



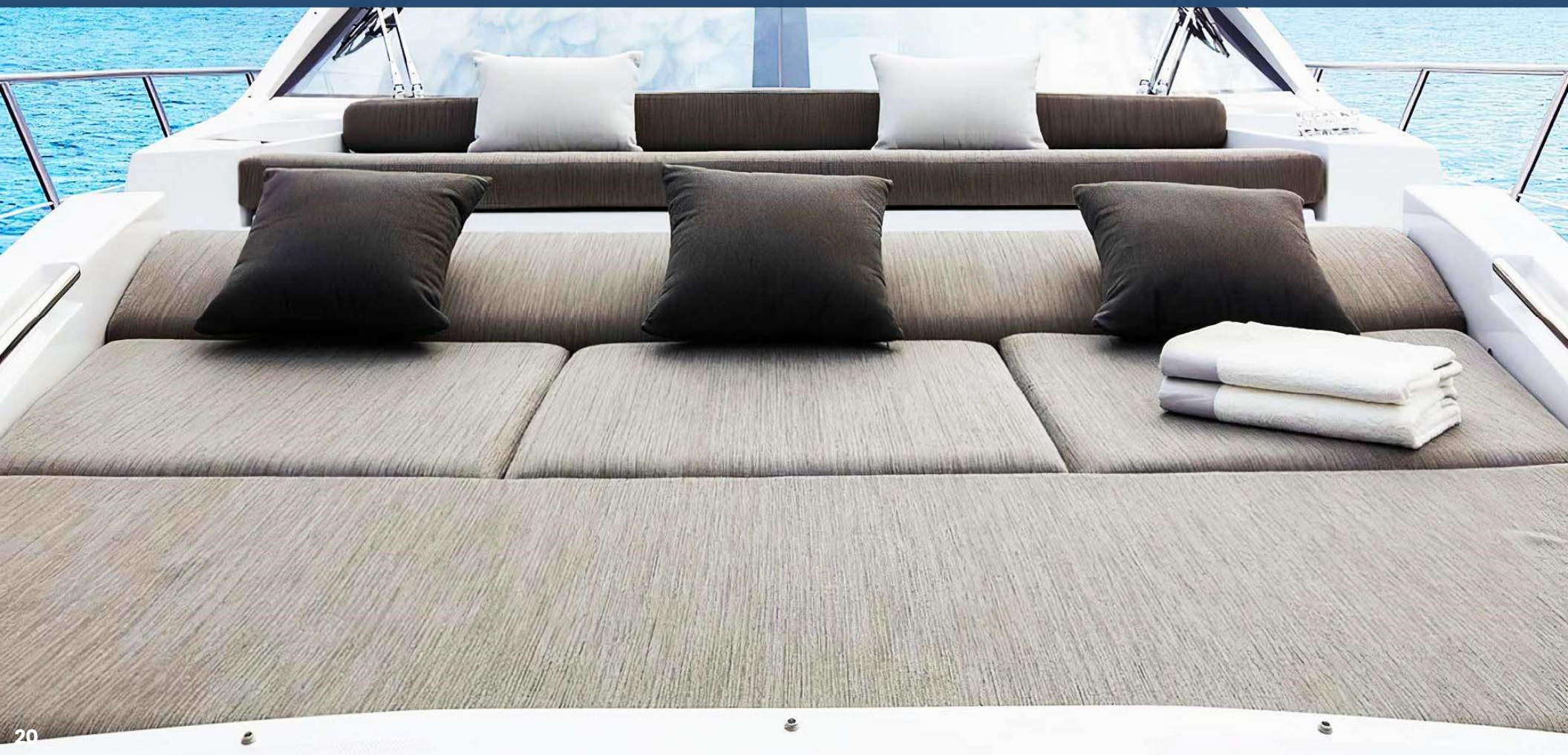
MY AMF – AZIMUT S6 – AFT DECK



MY AMF - AZIMUT S6 - AFT DECK



MY AMF – AZIMUT S6 – FORE DECK



MY AMF – AZIMUT S6 – FORWARD SUNPAD



MY AMF – AZIMUT S6 – PERSPECTIVE VIEW

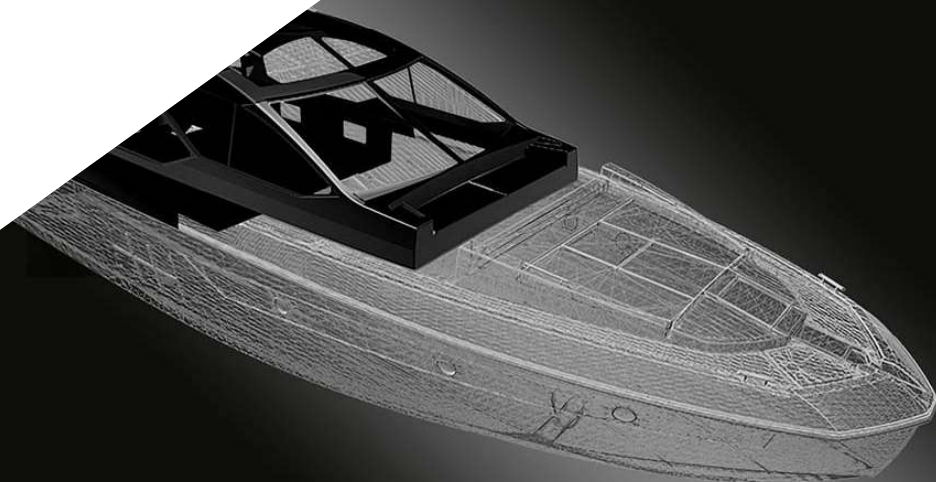


MY AMF - AZIMUT S6 - AERIAL VIEW



Live Your
Dream | **MY AMF**

59'1" (18 M) | AZIMUT | 2021 | ITALY



FEATURES

**TRIPLE POD PROPULSION COMBINED
WITH CARBON FIBER**

The adoption of triple Pod propulsion, combined with the optimization of the water lines and the extensive use of carbon fiber, reduces fuel consumption and CO₂ emissions by **20 to 30%*** in the main speed range: *compared to vessels of the same weight and size with a traditional hard-chine hull and shaft line propulsion.



FEATURES

CARBON-TECH GENERATION

The use of carbon fiber is a construction choice that allows volumes and surfaces to be increased in size while keeping the same weight, therefore maintaining excellent levels of dynamic stability.

Carbon fiber lamination is applied to:

- deck (hybrid)
- superstructure
- transom/platform



FEATURES

TRIPLE IPS PROPULSION

Triple Volvo IPS propulsion system installed on hydrodynamic optimized hull shape.

- Superior maneuverability
- Minimum noise and vibration level
- Best fuel efficiency (up to 25% reduction compared to shaft line)



FEATURES

JOYSTICK DRIVING

Joystick Driving offers an easy way to maneuver with precision and at the same time it allows the driver to steer comfortably at all speeds with only one hand. When Joystick Driving is activated, the Autopilot turns on simultaneously. The driver steers the boat by moving the Joystick. When the Joystick is released, the Autopilot is engaged and keeps a forward course.



FEATURES

INTEGRATED CONTROL & MONITORING SYSTEM

The integrated control system by Raymarine has been customized to increase control potential: from engine data and alarms, to bilge and water discharge pumps, tank levels and engine room ventilation, right through to the sound system and the air conditioning units. The system can be accessed from both helm stations and remotely from a tablet.



FEATURES

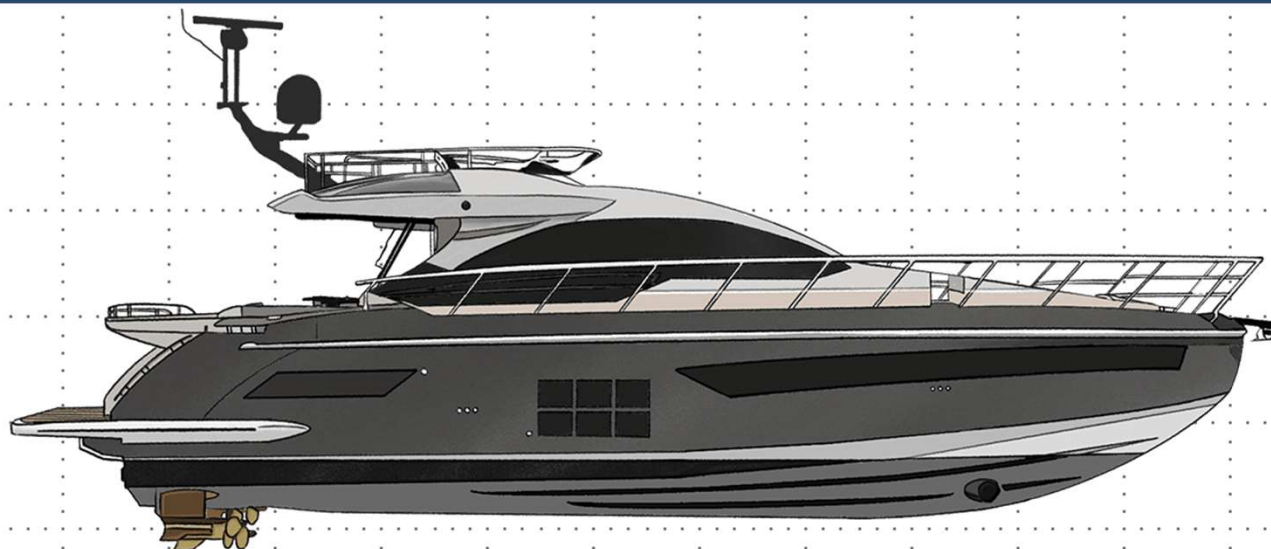
ACTIVE TRIM CONTROL

Automatic interceptors by Volvo gives the vessel the lift it needs to get up on plane faster or to reach that optimum running trim. In this way the resistance of the hull is automatically optimized for every speed and load condition, this resulting in increased speed and lower fuel consumption.

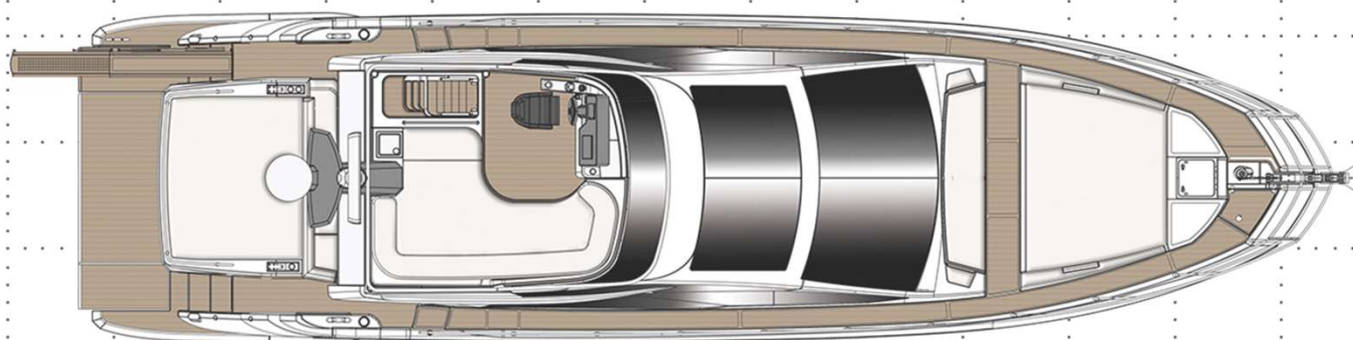


MY AMF – AZIMUT S6 – PROFILE & UPPER DECK

PROFILE

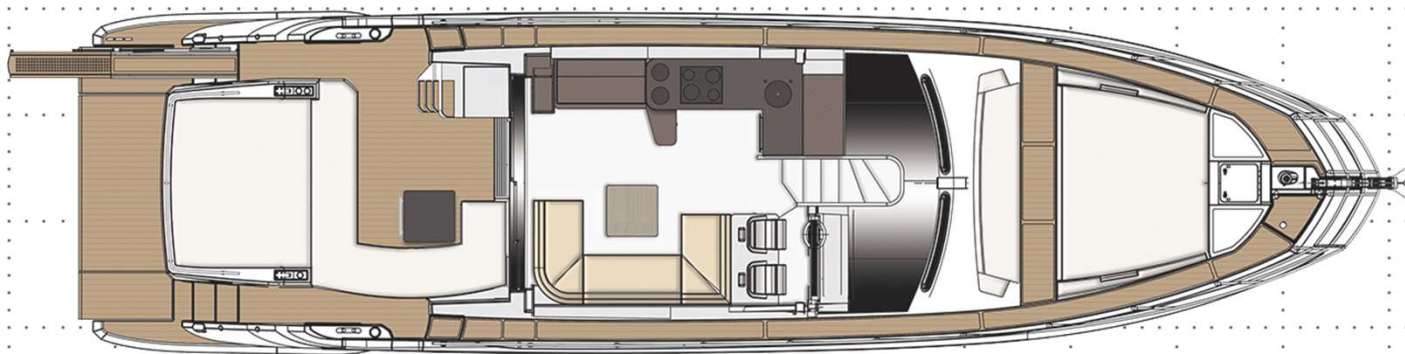


UPPER DECK



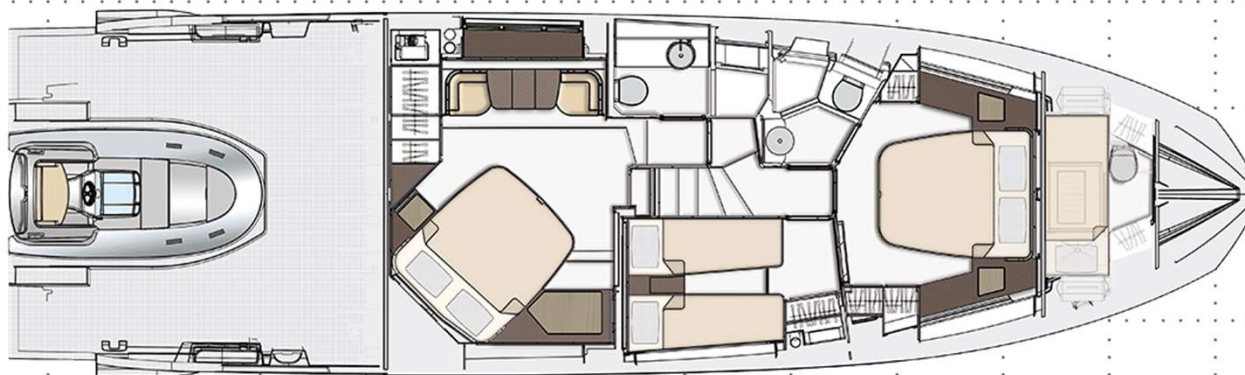
MY AMF – AZIMUT S6 – MAIN & LOWER DECK

MAIN DECK



LOWER DECK

Tender Excluded



SPECIFICATIONS

• Builder:	Azimut Yachts	• Maximum Speed:	up to 34*/35 knots
• Year:	2021	• Cruising Speed:	up to 29*/30 knots
• Construction:	GRP + Carbon Fiber	• Range:	275 Nautical miles at 30 knots
• Exterior Design:	Stefano Righini	• Main Engines:	3 X VOLVO IPS 700 - D8 - (405 kW - 550 Hp)
• Interior Design:	Francesco Guida	• Generator:	1 X KOHLER 3.5 KW - 220V / 50 Hz
• Length Overall:	59' 1" (18 m)	• Guests Cruising:	6
• Beam:	15' 7" (4.75 m)	• Crew:	2
• Draft (at full load):	5' 3" (1.61 m)	• Cabins:	3 + 1 crew
• Displacement (at full load) :	65.036 lb (29.83 t)	• Berths:	6 + 1 crew
• Stabilizers:	Seakeeper Stabilizer NG9	• Ensuities:	2 + 1 crew
• Type:	Motoryacht		

FEATURES & AMENITIES

- Less fuel consumption & CO2 emissions.
- With joystick control for precision.
- Bimini top on flybridge.
- Bimini top on bow w/ carbon poles.
- Living area illuminated by large side windows.
- Safe in master cabin closets.
- Toilet w/bidet faucet feature.
- Drawer refrigerator in cockpit.
- Hi-lo TV entertainment set in living area.
- Icemaker in cockpit.
- With washer/dryer.
- Wooden floor in salon.



This brochure has been provided for informational use only and may not be used for contract purposes.

Note: Fabrics and surfaces may have been updated and/or modified since the time photos were provided. Please verify all finishes upon inspection