

SUMMER 2022

Live Your
Dream | **REVERIE**



165' (50.25 M) | FEADSHIP | 2000/2022 | HOLLAND

REVERIE - UNDERWAY



REVERIE - INTRODUCTION

REVERIE

REVERIE is a well sought-after pedigree Feadship with her interior and exterior penned by award-winning stylists. The décor and styling is contemporary and elegant, with chic furnishings, custom finishes, fine arts, and wide-open spaces.

SPECIFICATIONS

BUILDER Feadship	MATERIALS Aluminum
STYLIST Donald Starkey	NAVAL ARCHITECT De Voogt
COUNTRY Holland	FLAG Cayman
YEAR 2000	REFITS 2017 2022
MAIN ENGINES 2 x Caterpillar	GENERATORS 3 x Northern Lights

DIMENSIONS

LENGTH 165' (50.25m)	VOLUME 692 GRT
BEAM 31' (9.45m)	DRAFT 7'16" (2.28m)

ACCOMODATION

GUESTS 14 in 6 Staterooms	CREW 13
------------------------------	------------



REVERIE – MAIN DECK INTERIOR



REVERIE – MAIN DECK DINING



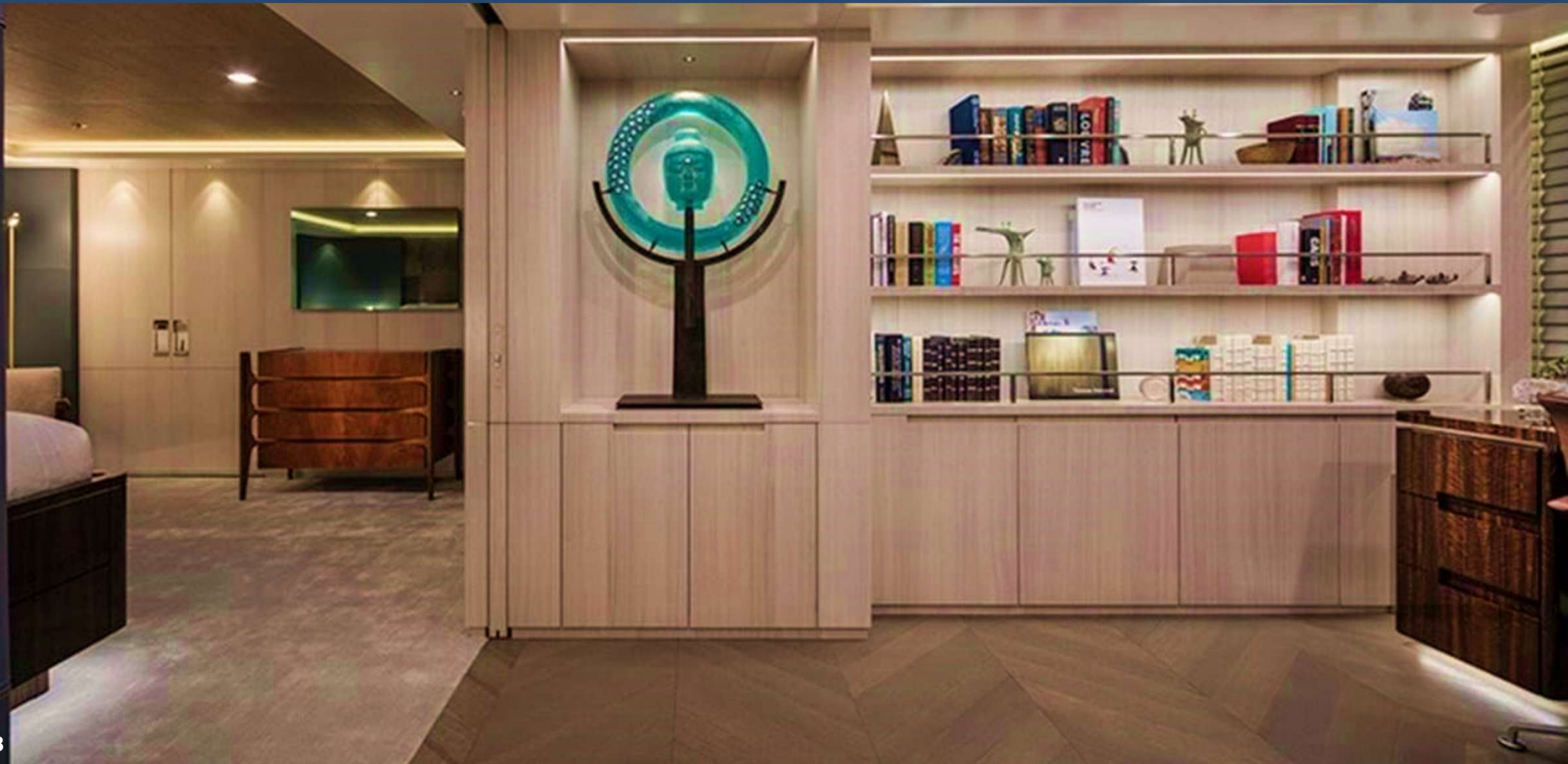
REVERIE – MAIN DECK SALOON



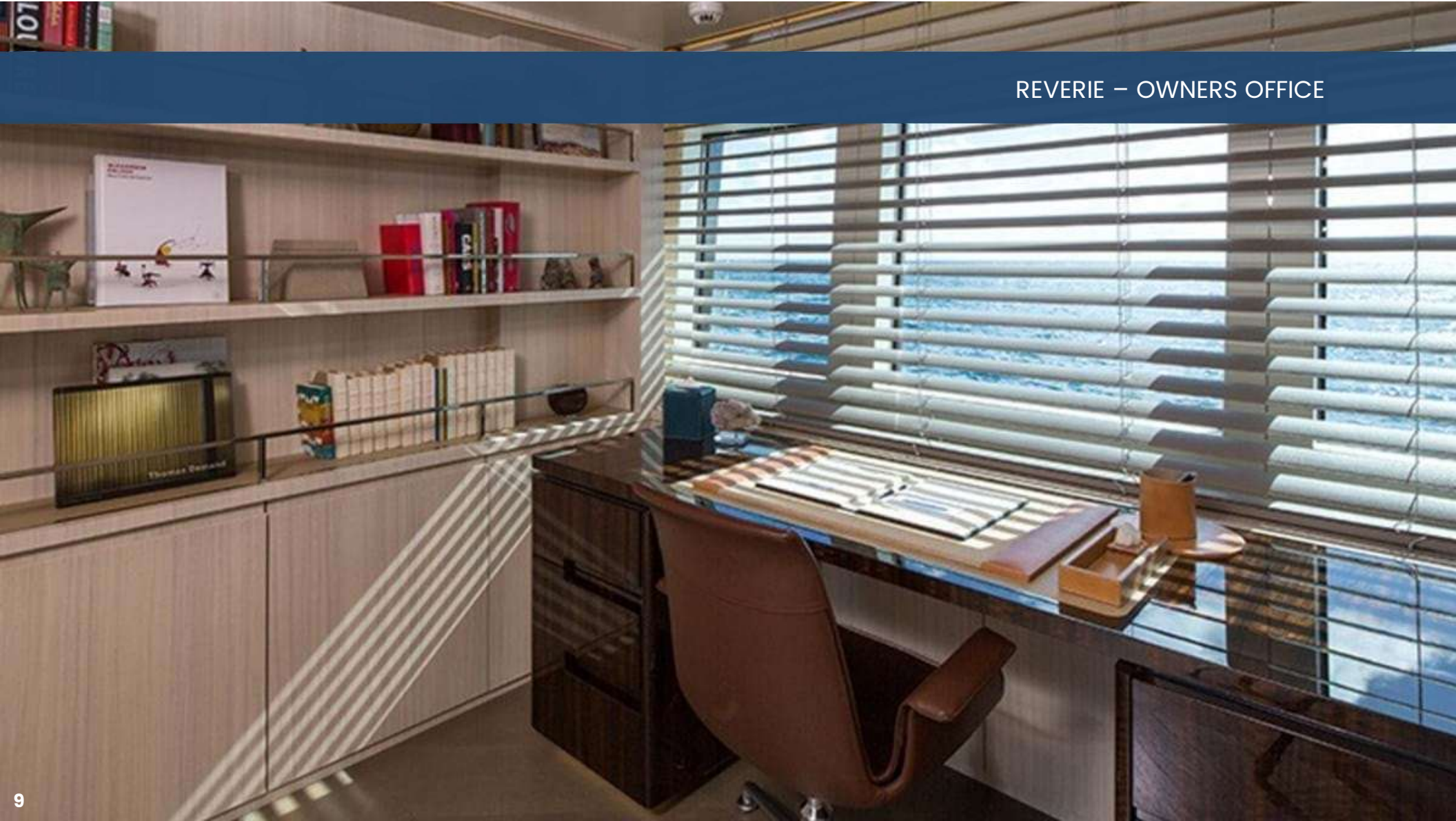
REVERIE – OWNERS SUITE



REVERIE – OWNERS SUITE



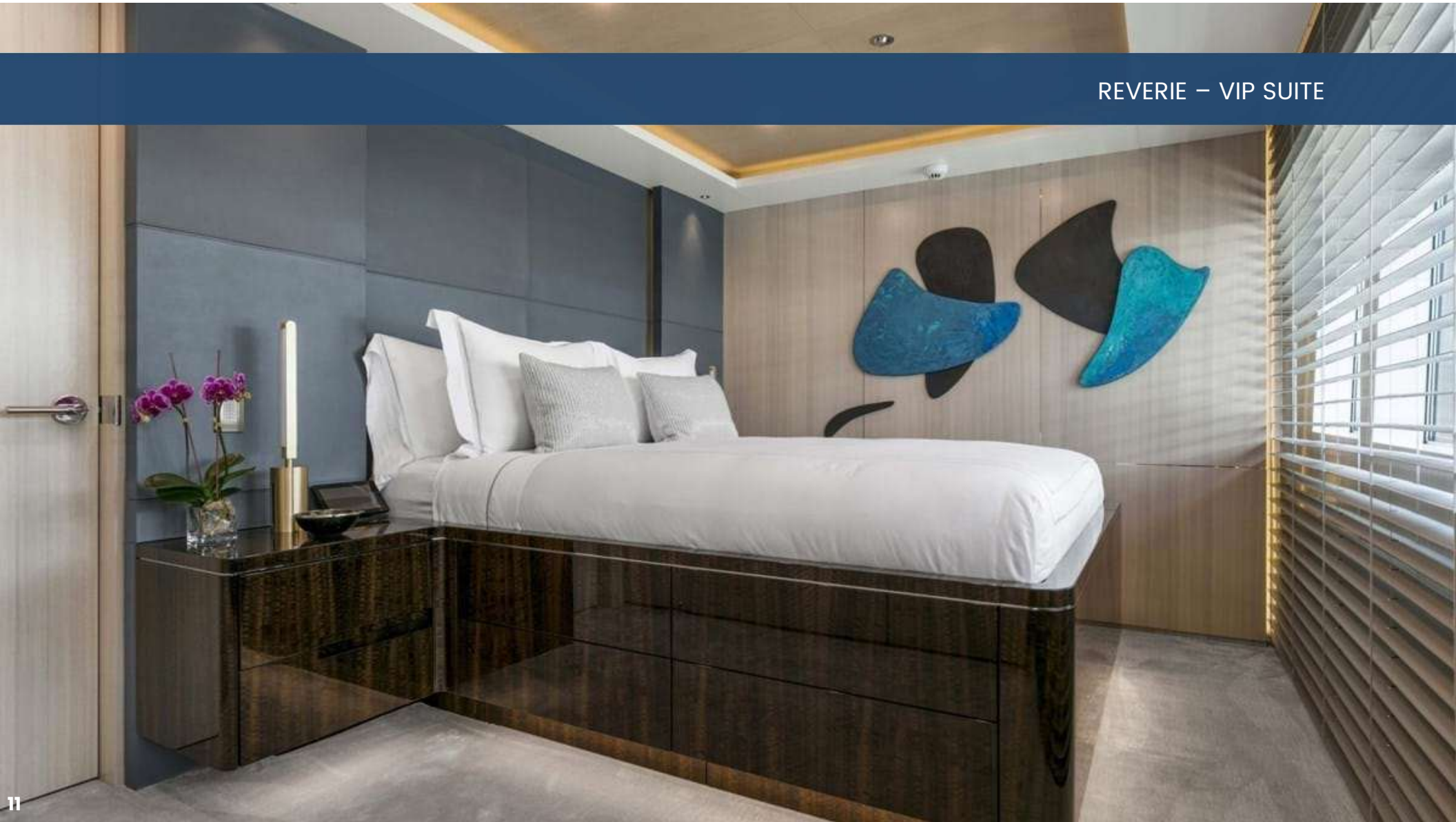
REVERIE – OWNERS OFFICE



REVERIE – OWNERS BATH



REVERIE – VIP SUITE



REVERIE – GUEST SUITE



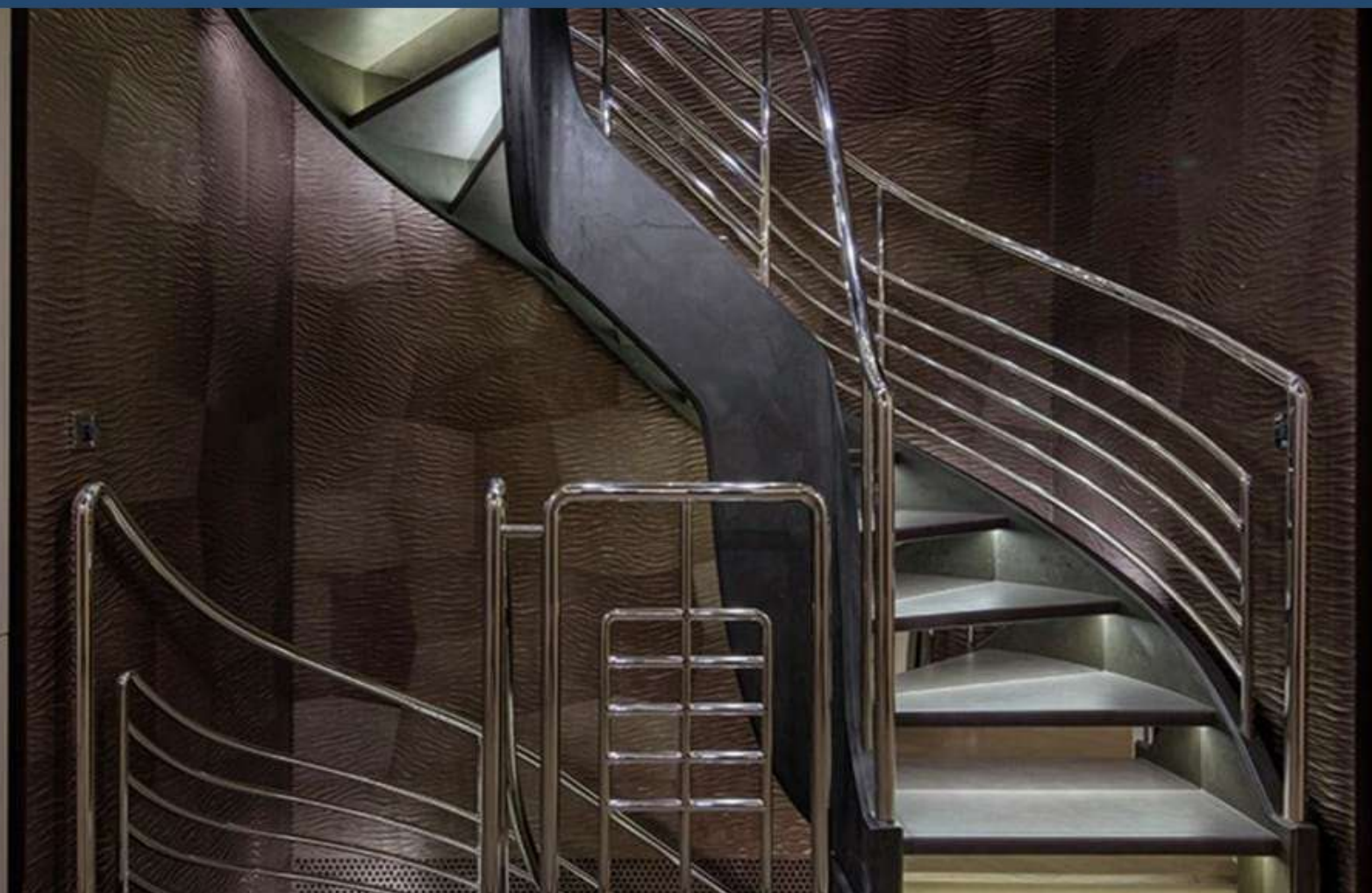
REVERIE – GUEST SUITE



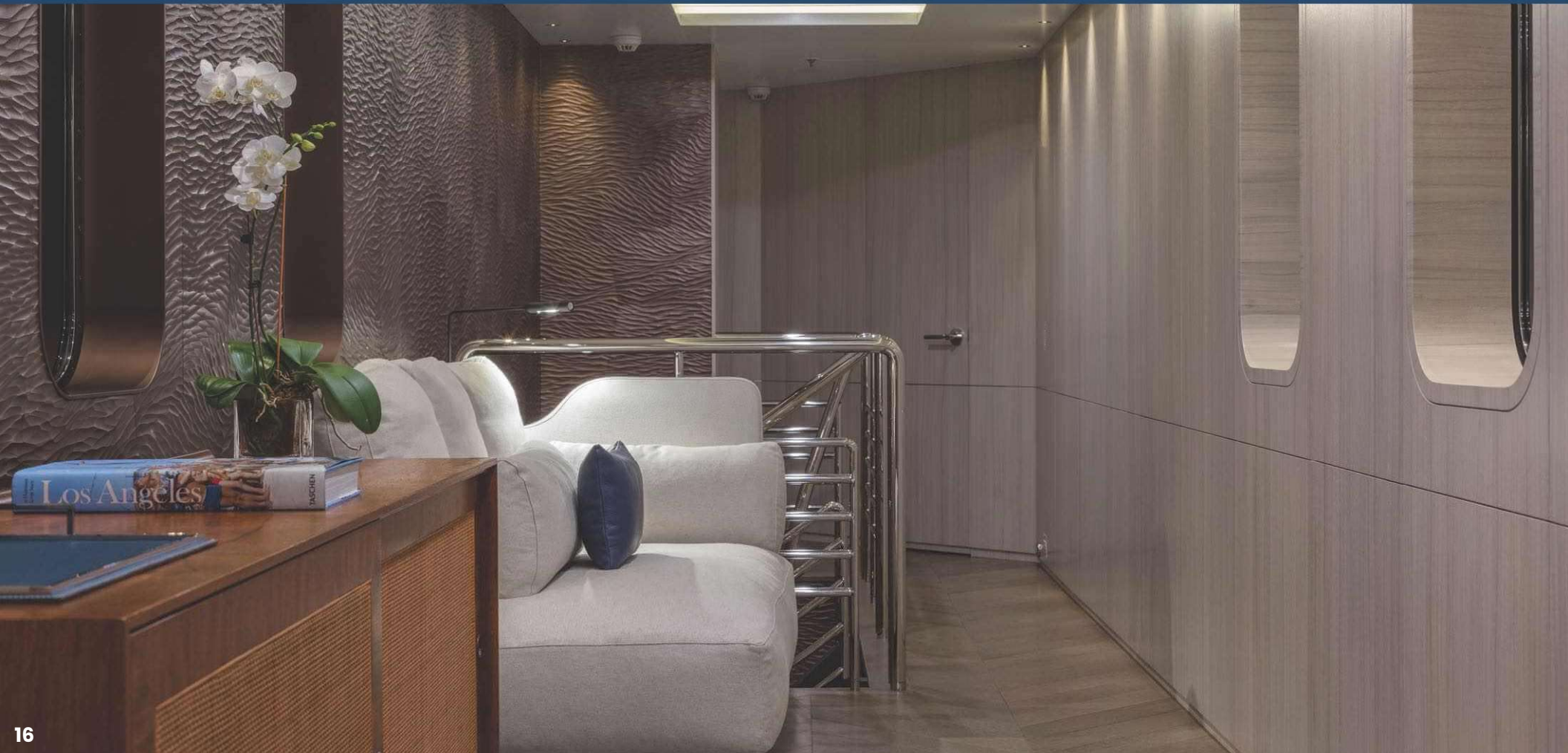
REVERIE – MAIN DECK FOYER



REVERIE – MAIN DECK STAIRS



REVERIE – UPPER DECK LOUNGE



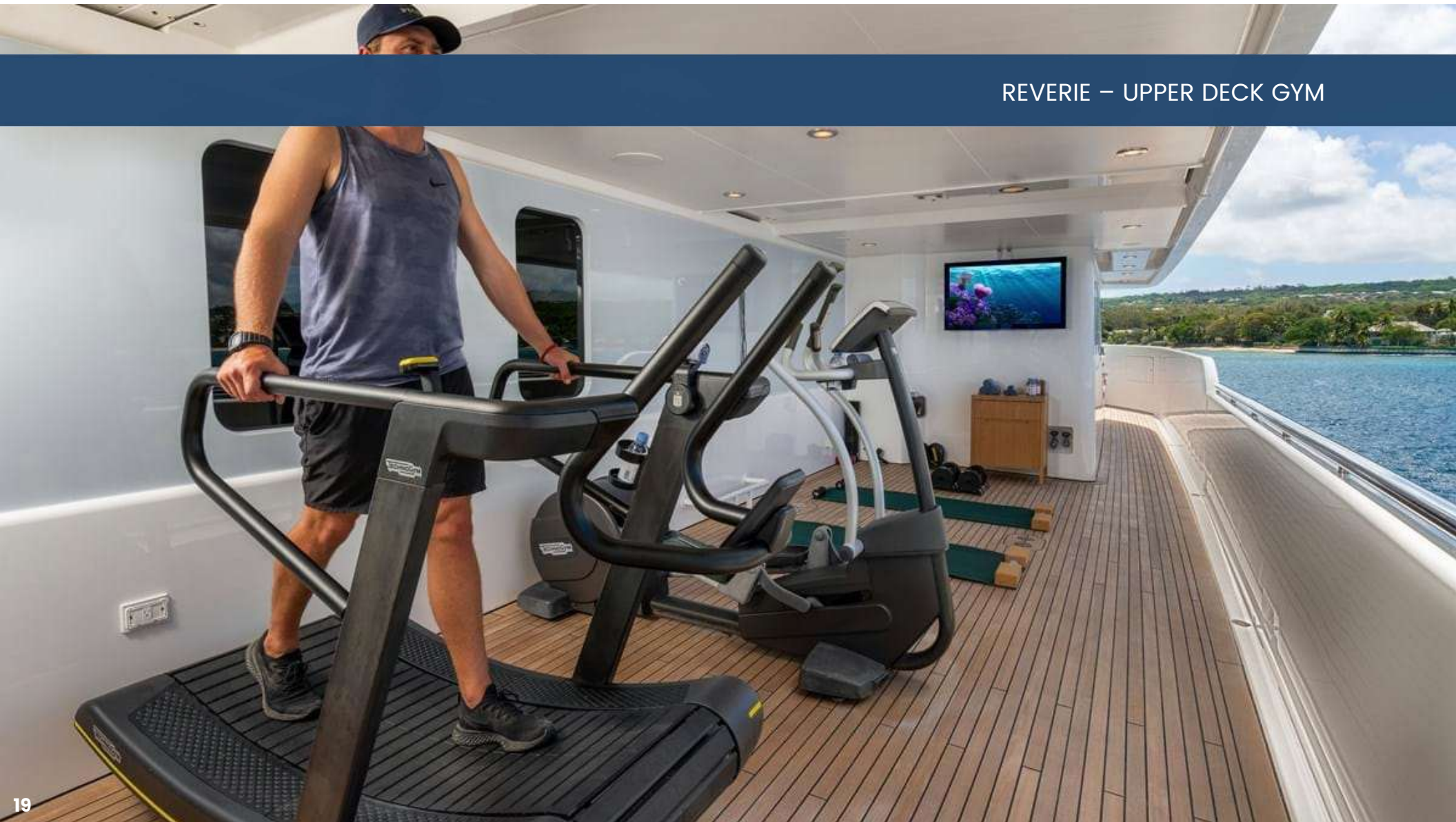
REVERIE – SKY LOUNGE



REVERIE – UPPER DECK SPA



REVERIE – UPPER DECK GYM



REVERIE – UPPER DECK DINING



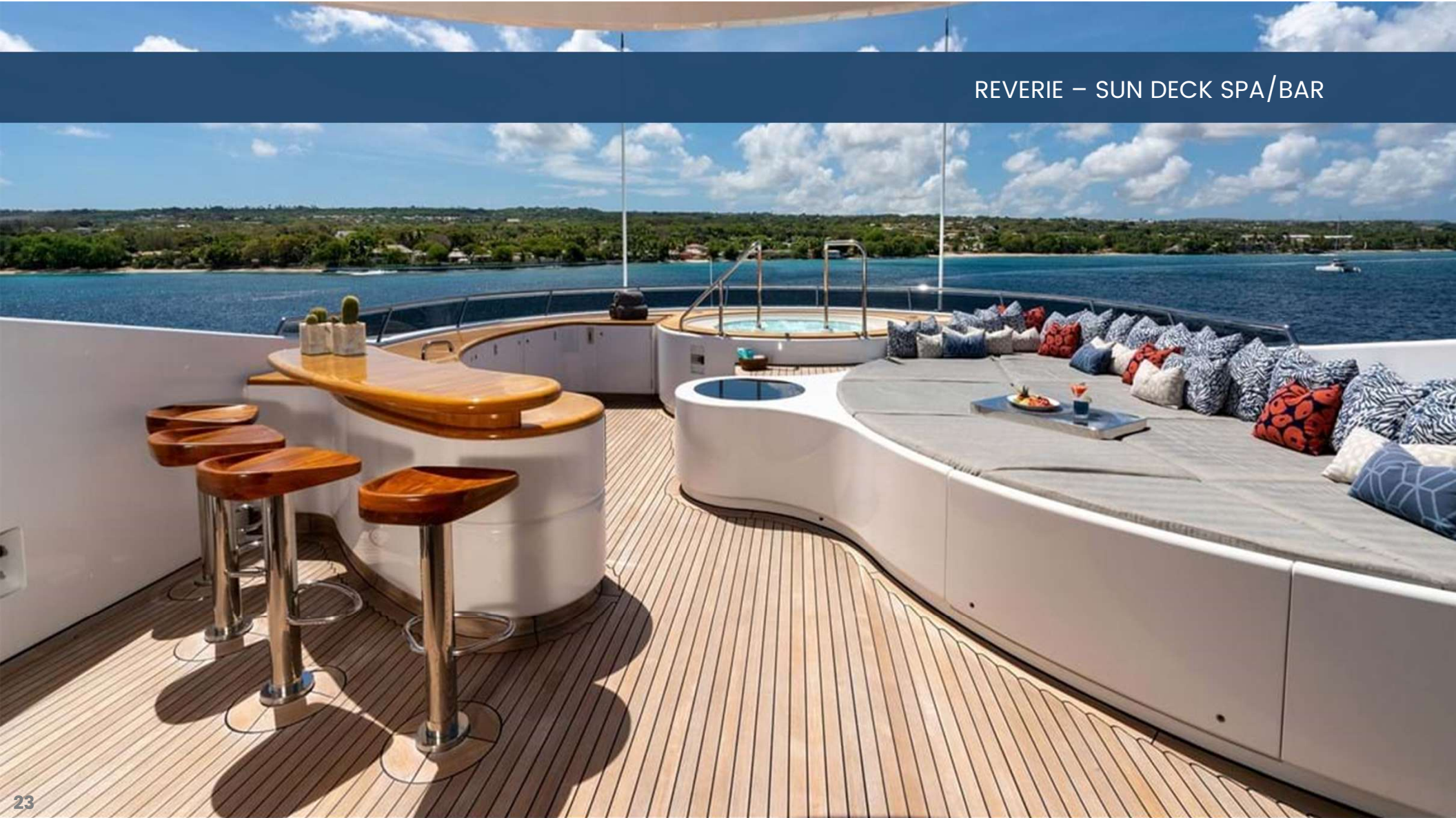
REVERIE – MAIN DECK LOUNGE



REVERIE – MAIN DECK BAR



REVERIE – SUN DECK SPA/BAR



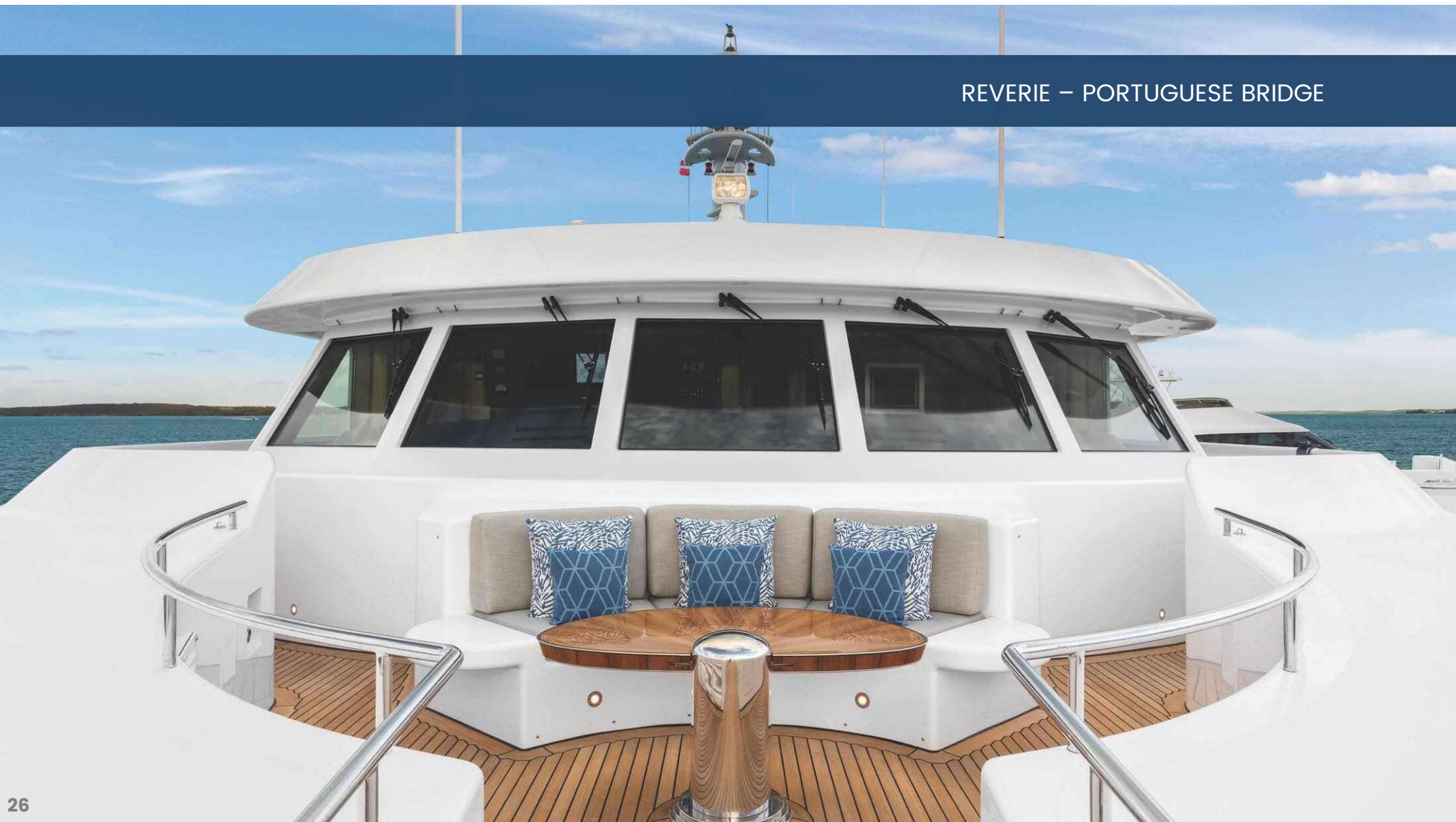
REVERIE – SUN DECK LOUNGE



REVERIE – SUN DECK LOUNGE AFT



REVERIE – PORTUGUESE BRIDGE



REVERIE – TOYS



REVERIE – FLOATING CLUB



REVERIE – AERIAL VIEW

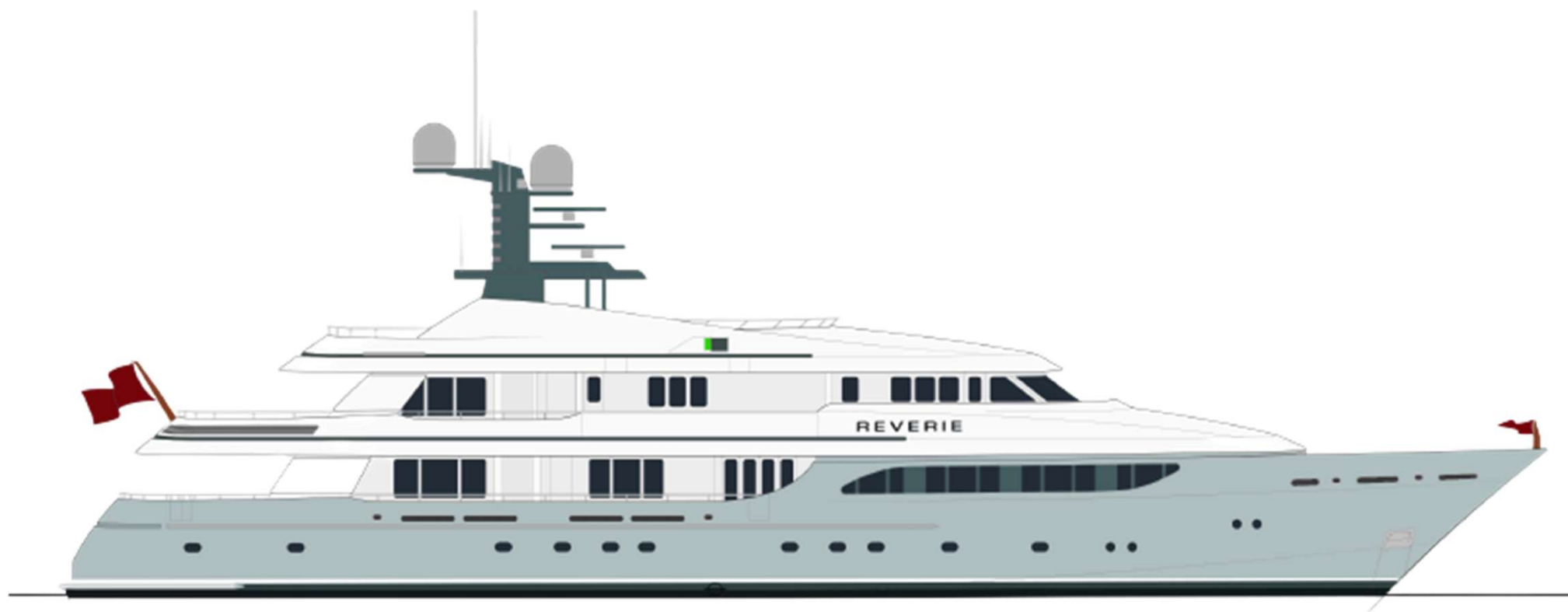


Live Your
Dream | **REVERIE**



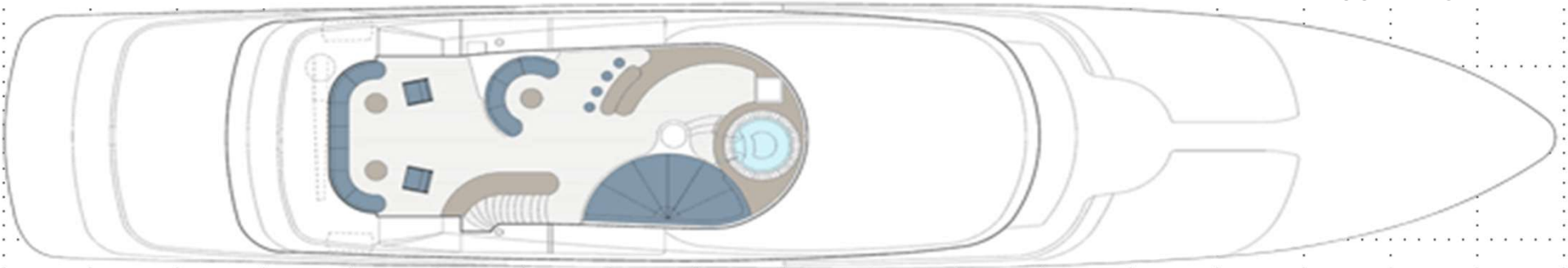
165' (50.25 M) | FEADSHIP | 2000/2022 | HOLLAND

REVERIE - PROFILE



REVERIE – SUN DECK / UPPER DECK

SUN DECK



UPPER DECK



REVERIE - MAIN DECK / LOWER DECK

MAIN DECK



LOWER DECK



SPECIFICATIONS

- | | | | |
|--------------------|--|--------------------|---|
| • Shipyard: | Feadship – Royal van Lent | • Stabilizers: | Quantum Zero Speed |
| • Year: | March 2000 Refit 2017,2022 | • Maximum Speed: | 17 knots |
| • Construction: | Aluminum Hull, Aluminum Superstructure | • Cruising Speed: | 14 knots |
| • Class: | Lloyds / MCA | • Range: | 5,000 Nautical miles at 12.7 knots |
| • Exterior Design: | Donald Starkey | • Main Engines: | 2 x Caterpillar 3512b DITA |
| • Interior Design: | Adam Voorhes | • Generators: | 3 x Northern Lights 145 KW 120/208 VAC, 60 Hz |
| • Length Overall: | 165' (50.25m) | • Guests Cruising: | 12 |
| • Beam: | 31' (9.45m) | • Guests Sleeping: | 14 in 6 cabins (2 pullman bunks) |
| • Draught: | 7' 6" (2.28m) | • Crew: | 13 |
| • Gross Tonnage: | 692 GRT | • Crew Cabins: | 6 |

FEATURES & AMENITIES

- | | | |
|---|--------------------------------------|---------------------------------------|
| • Large sun deck area | • Formal and alfresco dining | • Wet bars on sun deck and aft deck |
| • Guest suites convert to king or twin beds | • VIP suite adjacent to master suite | • Exterior TV's and entertainment |
| • 220 bottle wine refrigerator | • Outdoor gym and spa | • Extensive water toys and tenders |
| • Large open sun deck lounging | • Large floating beach club | • Aft engine room and generator rooms |

REFIT 2022

- Five-year annual hull survey complete
- New shaft bearings
- New through-hulls & valves
- New blasting and tank-coat in potable, grey, and black tanks
- New bottom paint and prop-speed
- New air handlers on all decks
- New water maker membranes
- New exterior soft goods
- New interior soft goods
- New interior motorized blinds
- New reconditioned leather and overheads in bridge
- New galley appliances
- New pep wave communications
- New radar and nav in bridge
- New jet skis
- New e-foil
- New exterior tables on all decks
- New guest bedding
- New crew bedding / mattresses
- New ice machine in lazarette
- New laundry press
- New transom tender fender
- New crew crockery
- New kenter links and swivels for ground tackle

- New BBQ grill
- New Jura coffee machine
- New slushy machines
- Interior marble polished and sealed
- Jacuzzi and plumbing serviced
- Foredeck crane serviced / rebuilt
- Reefing and caulking foredeck, and bridge side decks
- Upper deck awning refurbished too new
- 2x Main engines serviced
- 3x Generators serviced
- Stabilizers serviced
- Refinished bar tops on all decks
- Refinished teak deckheads
- etc

SCHEDULED FALL 2022

- New hull paint and color scheme
- New air-conditioning plant
- Passarelle rebuild

REFIT 2017

- USD 12mm complete interior replacement